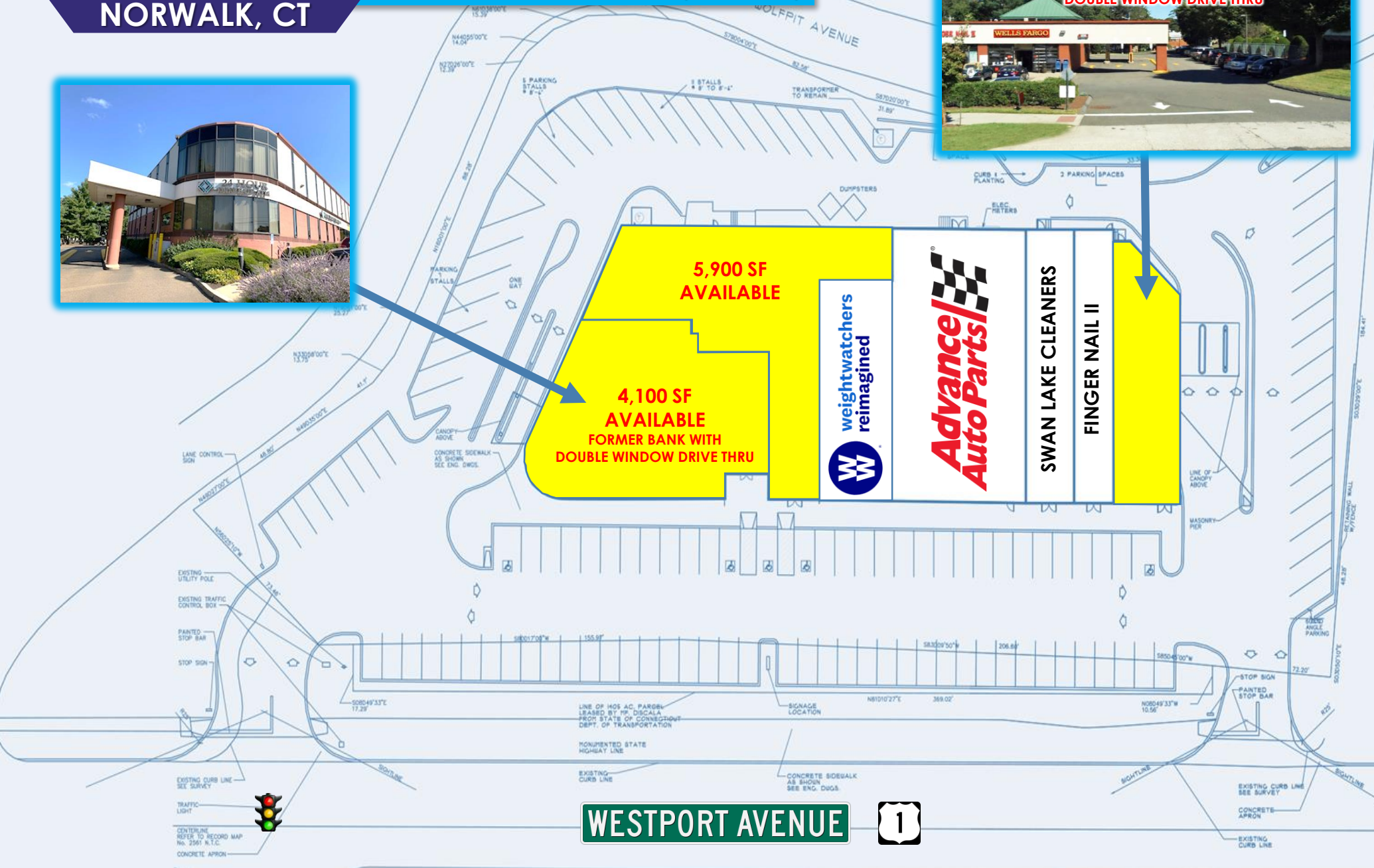


NORWALK, CT

SEDONA PLAZA
295 WESTPORT AVENUE (ROUTE 1)



2,200 SF AVAILABLE
FORMER BANK WITH
DOUBLE WINDOW DRIVE THRU



5,900 SF
AVAILABLE

4,100 SF
AVAILABLE
FORMER BANK WITH
DOUBLE WINDOW DRIVE THRU

weightwatchers
reimagined

Advance
Auto Parts

SWAN LAKE CLEANERS

FINGER NAIL II

WESTPORT AVENUE



ROYAL
PROPERTIES