

Yonkers, NY

1980 Central Park Avenue

FREESTANDING BUILDING FOR LEASE



AVAILABLE:

3,417 SF Freestanding Building

NEIGHBORING RETAILERS:

Best Buy, DSW, H-Mart, Alamo Theatre, Kohl's, Chase Bank, PetSmart, CVS, Famous Footwear, Burlington Coat Factory, Five Guys, The Children's Place, Pier 1 Imports, Sherwin Williams, The Westchester Bank, Hallmark, Starbucks, TJ Maxx, HomeSense, Bob's Discount Furniture, New York & Company and many more

TRAFFIC COUNT:

31,546 Cars per Day Along Central Park Avenue

ADDITIONAL INFORMATION:

- Freestanding Building on .27 Acre Lot
- Located on the Main Shopping Corridor and Major North-South State Highway in Westchester County
- Excellent Visibility

RENT:

Call for Details

TAXES:

Call for Details

AREA DEMOGRAPHICS

	1 Mile	3 Miles	5 Miles
Population	19,366	156,317	495,741
Avg. HH Income	\$151,811	\$168,663	\$140,055

**For More Information,
Please Contact:**

914-237-3400

Karnit Mosberg – Ext. 110
Karnit@RoyalPropertiesInc.com

David Landes – Ext. 104
David@RoyalPropertiesInc.com

Jeff Kintzer – Ext. 103
Jeff@RoyalPropertiesInc.com



ROYAL
PROPERTIES

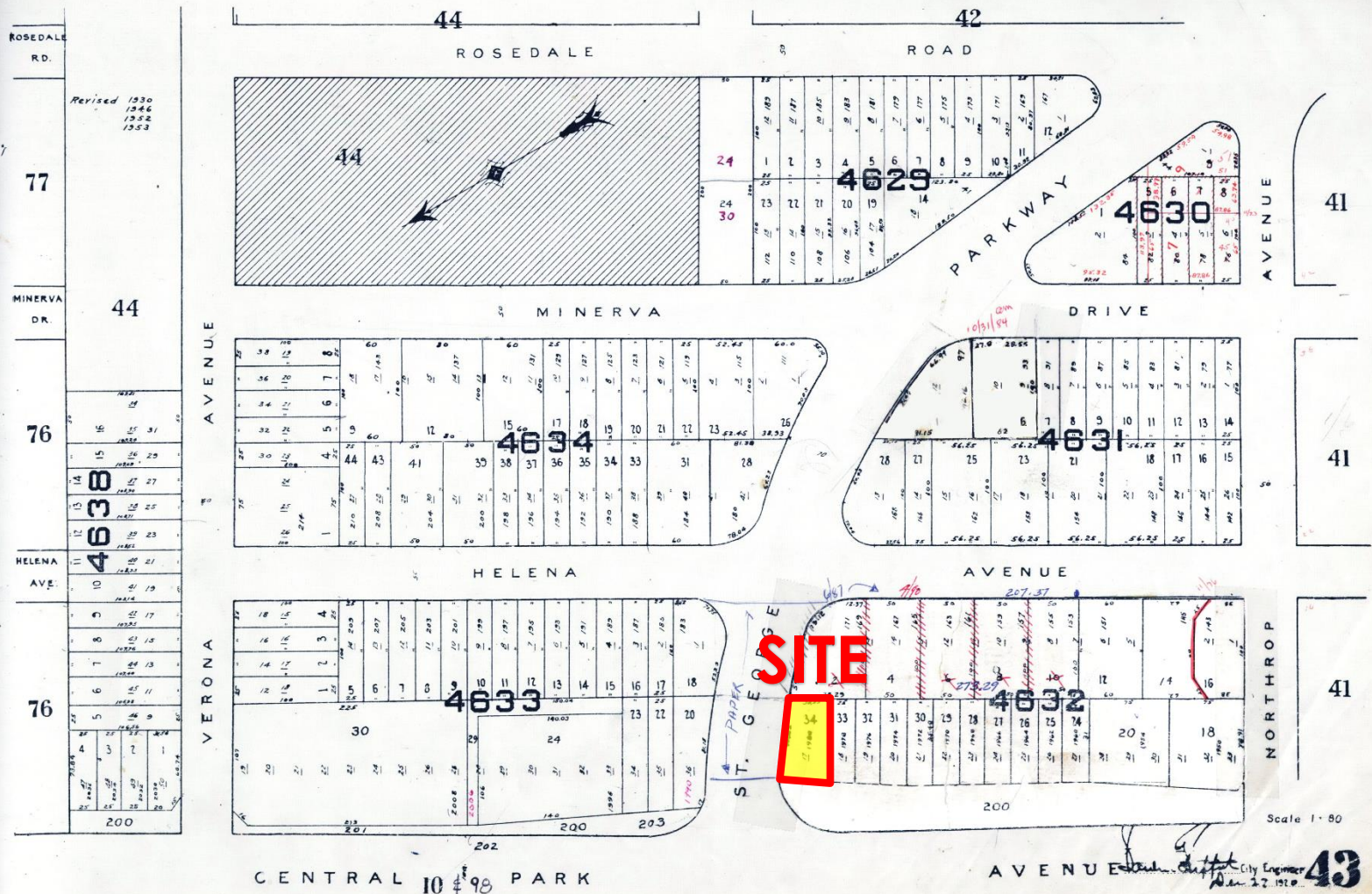
www.RoyalPropertiesInc.com

Yonkers, NY

1980 Central Park Avenue



1980 Central Park Avenue



Yonkers, NY

1980 Central Park Avenue

