

750
SQUARE

TENANT

TENANT

750 White Plains Road
EASTCHESTER • NEW YORK

Retail Redevelopment
16,272 RSF & 12,049 SF



EASTCHESTER, NY

750 SQUARE ▪ 750 WHITE PLAINS ROAD (ROUTE 22)

RETAIL SPACE FOR LEASE

JOIN CO-TENANTS



PLUS NEWLY SIGNED LUXURY F&B RETAIL COMING SOON

HIGHLIGHTS

- 220,075 SF Retail Redevelopment
- 16,272 RSF & 12,049 SF Available For Lease
- Join 38,000 SF Saks Off Fifth & 74,000 SF White Plains Hospital Medical Offices (Coming Soon)
- Multiple Access Points
- Adjacent To Vernon Hills Shopping Center
- Prominent Shopping Destination In S. Westchester County
- 640 Parking Spaces
- Ceiling Heights: Up to 16'-8" Floor to Slab (varies)
- Column Spacing: Approx. 30'
- Ease Of Access To The Hutchinson River Parkway And The Bronx River Parkway
- Traffic Counts: 11,312 Cars Per Day Along Route 22 (White Plains Road)

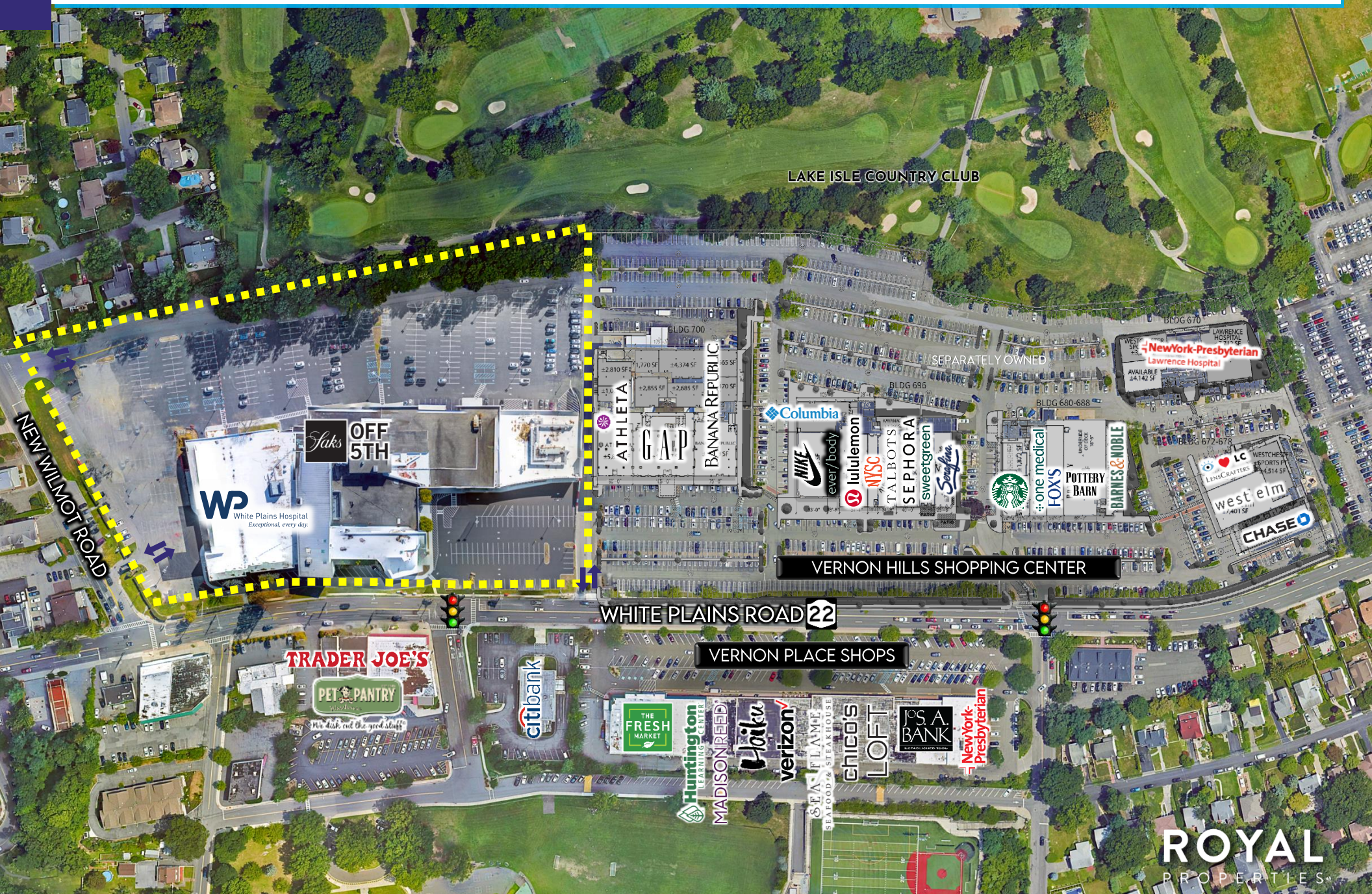
NEIGHBORING RETAILERS



EASTCHESTER, NY

750 SQUARE ■ 750 WHITE PLAINS ROAD (ROUTE 22)

RETAIL SPACE FOR LEASE



ROYAL
PROPERTIES

EASTCHESTER, NY

750 SQUARE ▪ 750 WHITE PLAINS ROAD (ROUTE 22)

LEVEL 1



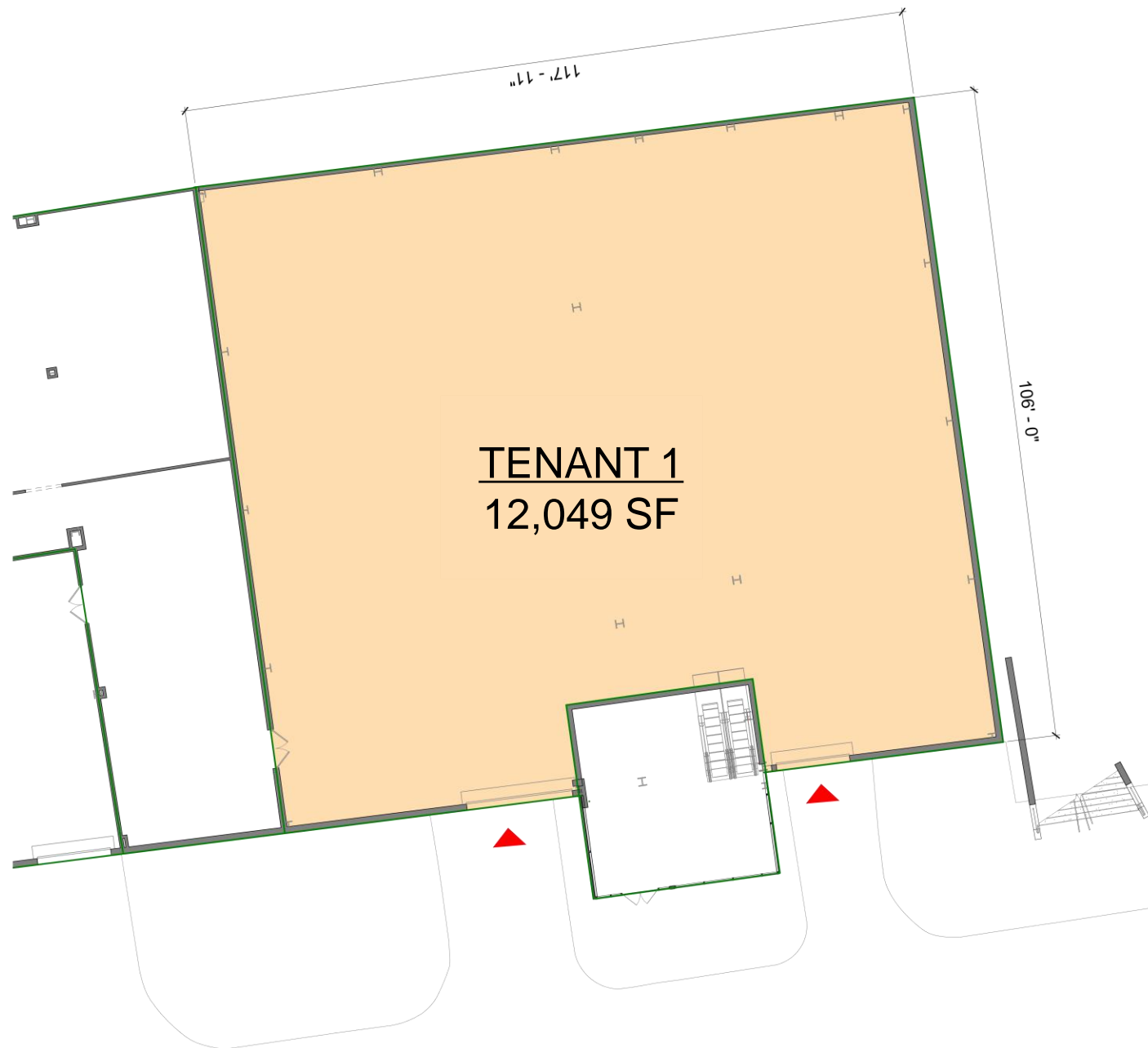
12,049 SF
AVAILABLE

ROYAL
PROPERTIES

EASTCHESTER, NY

750 SQUARE ▪ 750 WHITE PLAINS ROAD (ROUTE 22)

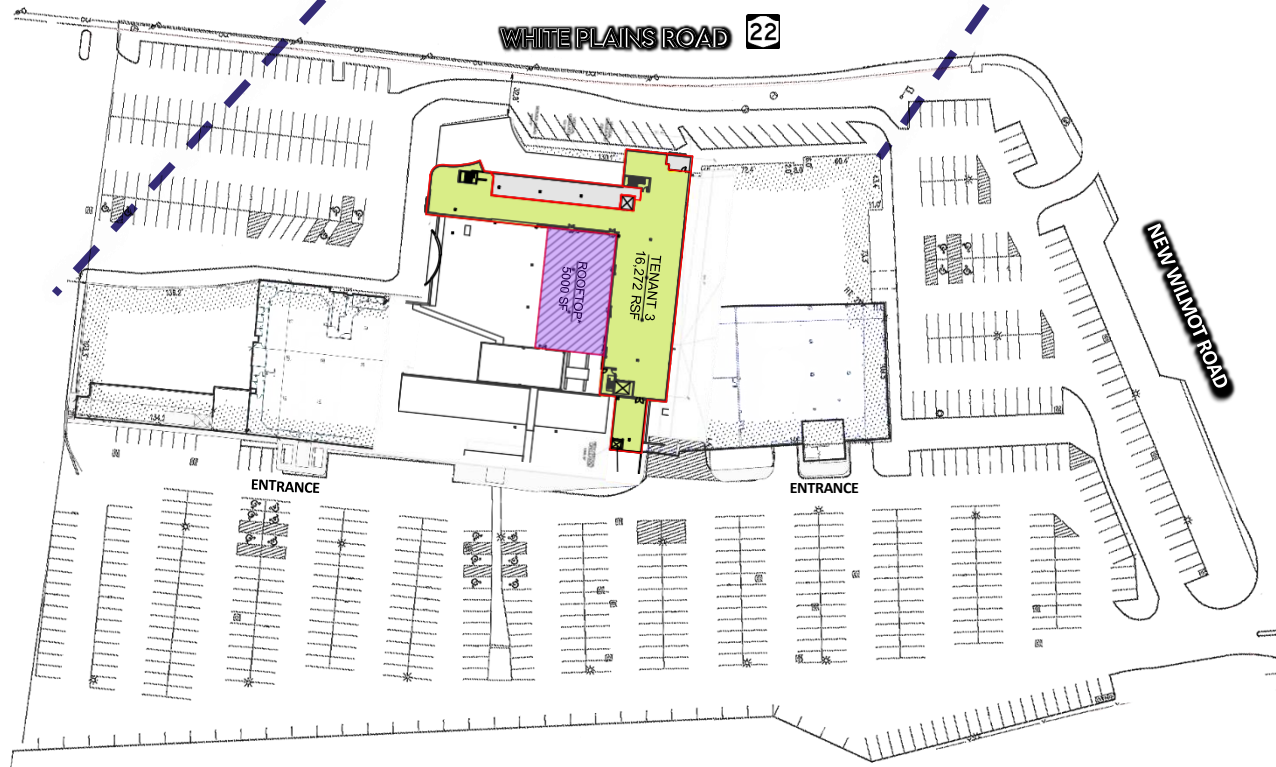
LEVEL 1



EASTCHESTER, NY

750 SQUARE ▪ 750 WHITE PLAINS ROAD (ROUTE 22)

LEVEL 3



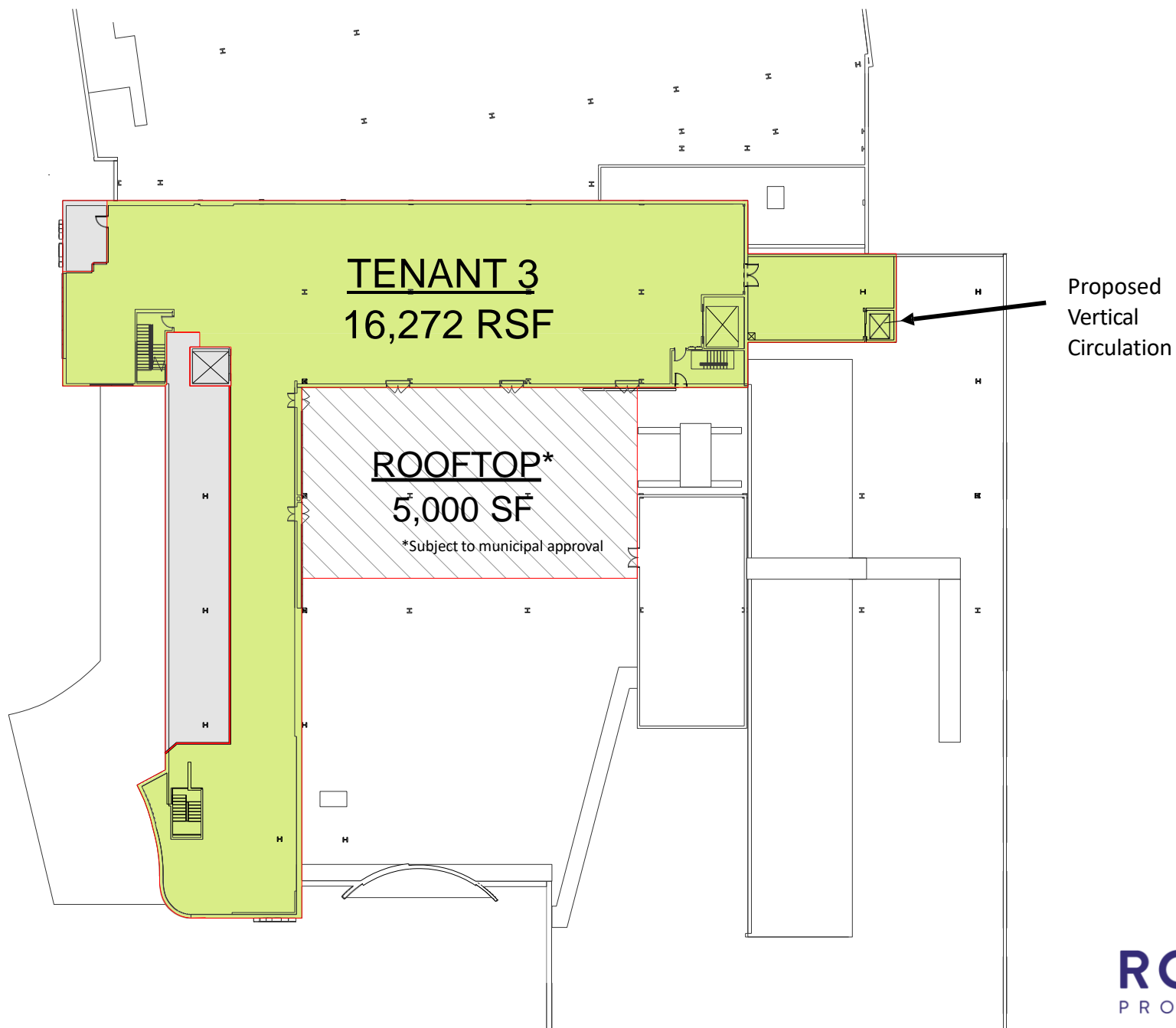
16,272 RSF
AVAILABLE

ROYAL
PROPERTIES

EASTCHESTER, NY

750 SQUARE ■ 750 WHITE PLAINS ROAD (ROUTE 22)

LEVEL 3



EASTCHESTER, NY

750 SQUARE ▪ 750 WHITE PLAINS ROAD (ROUTE 22)

LEVEL 3

PROPOSED
ACCESS
ROOFTOP
VESTIBULE

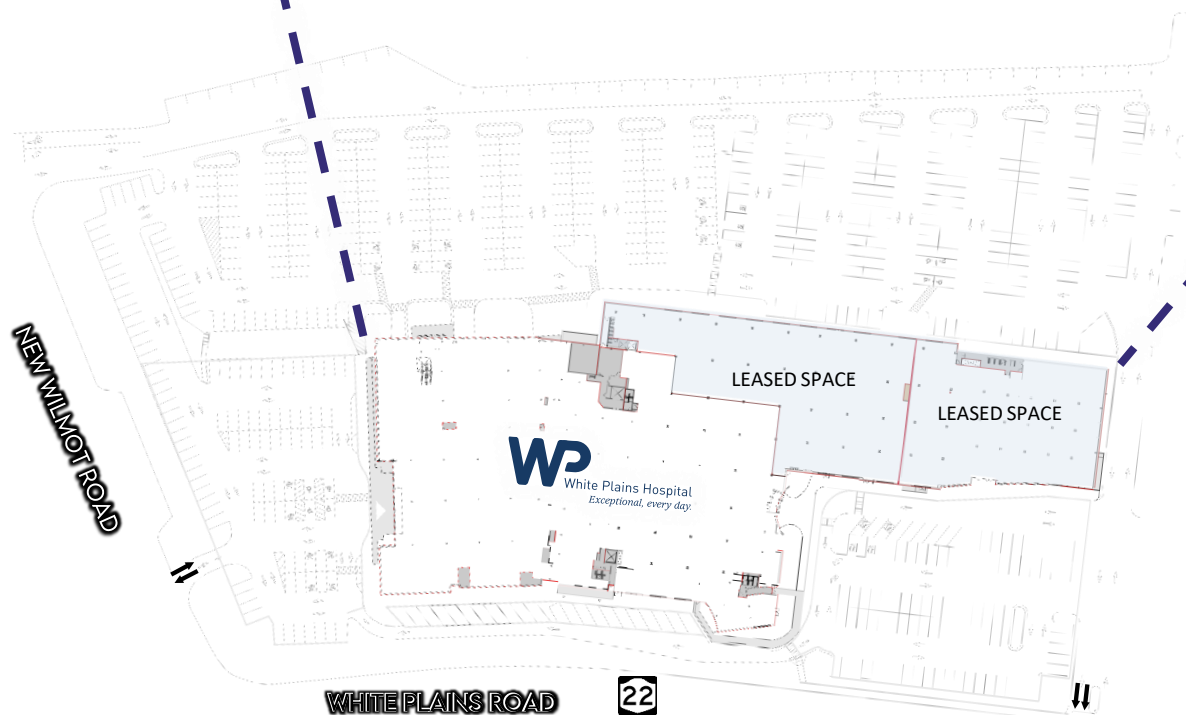
5,000 SF±
OUTDOOR
PATIO



EASTCHESTER, NY

750 SQUARE ■ 750 WHITE PLAINS ROAD (ROUTE 22)

LEVEL 2



EASTCHESTER, NY

750 SQUARE ■ 750 WHITE PLAINS ROAD (ROUTE 22)

RETAIL SPACE FOR LEASE

MARKET AERIAL

SITE



VERNON HILLS SHOPPING CENTER



EQUINOX

NEW WILMOT ROAD

WHITE PLAINS ROAD

22

TRADER JOE'S

DECICCO'S PLAZA



VERNON PLACE SHOPS



ROYAL
PROPERTIES



LEASING CONTACTS

DAVID LANDES

914-237-3400 – Ext. 104

David@royalpropertiesinc.com

ZACH LANDES

914-237-3400 – Ext. 123

Zach@royalpropertiesinc.com

KARNIT MOSBERG

914-237-3400 – Ext. 110

Karnit@royalpropertiesinc.com

WWW.ROYALPROPERTIESINC.COM

ROYAL
PROPERTIES

All information furnished herein is from sources deemed reliable. No warranty or representation is made to the accuracy thereof and it is submitted subject to errors, omissions and/or changes without notice.