

# CENTRAL PLAZA

2550 Central Park Avenue | Yonkers, NY | Westchester County

RETAIL SPACE  
FOR LEASE

17,507 SF± | 3,085 SF± | 3,756 SF± AVAILABLE



## BROKER CONTACT

DAVID LANDES  
914-237-3400, Ext. 104  
David@RoyalPropertiesInc.com

ZACH LANDES  
914-237-3400, Ext. 123  
Zach@RoyalPropertiesInc.com





# CENTRAL PLAZA

2550 Central Park Avenue | Yonkers, NY | Westchester County

RETAIL SPACE  
FOR LEASE

17,507 SF± | 3,085 SF± | 3,756 SF± AVAILABLE



## AVAILABLE:

- 17,507 SF± (Formerly Party City)
- 3,085 SF± (Currently Leslie's Pool Supply)
- 3,756 SF± (2nd Floor Former Arthur Murray Dance Studio)

## JOIN CO-TENANTS:

Lidl, Barnes & Noble, Bank of America, GNC, Verizon, McDonald's, Carter's, Five Below, IHOP, Diamond Braces, Bonchon, OshKosh B'Gosh, Visionworks and Tao's Supreme Central Buffet

## NEIGHBORING RETAILERS:

Best Buy, DSW, Burlington, Marshalls, ShopRite, Planet Fitness, Home Sense, PetSmart, Alamo Drafthouse Cinema, Kohl's, Ashley Furniture, Petco, Panera Bread, Starbucks, HSBC, Mattress Firm, Chick-fil-A, Chipotle, HMart, and many more

## ADDITIONAL INFORMATION:

- 145,703 SF Shopping Center Located on the Main Retail Corridor in Westchester County, NY
- High Ceilings
- Excellent Visibility
- 753± Parking Spaces

## TRAFFIC COUNTS:

28,427 Cars per Day Along Central Park Avenue

## RENT:

Call For Details

## CAM/TAXES:

\$14.27/SF

## AREA DEMOGRAPHICS

	1 Mile	3 Miles	5 Miles
Population	18,559	126,632	396,799
Avg. HH Income	\$150,548	\$173,007	\$144,818

## BROKER CONTACT

### DAVID LANDES

914-237-3400, Ext. 104

David@RoyalPropertiesInc.com

### ZACH LANDES

914-237-3400, Ext. 123

Zach@RoyalPropertiesInc.com

ROYAL  
PROPERTIES

# CENTRAL PLAZA

2550 Central Park Avenue | Yonkers, NY | Westchester County

RETAIL SPACE  
FOR LEASE

17,507 SF± | 3,085 SF± | 3,756 SF± AVAILABLE



# CENTRAL PLAZA

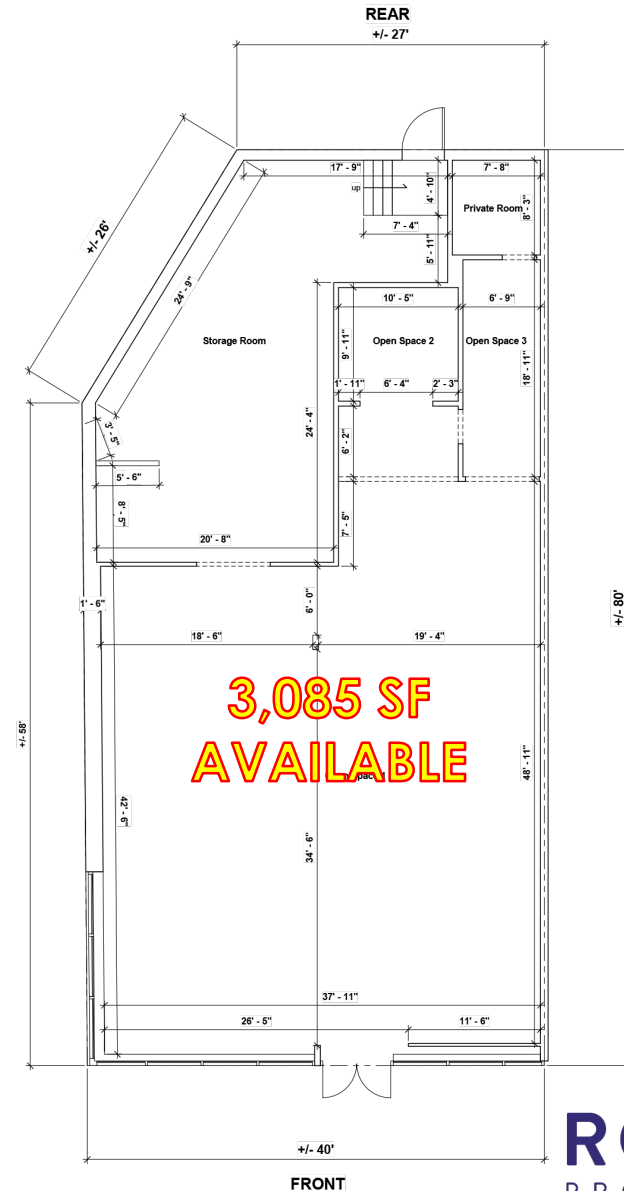
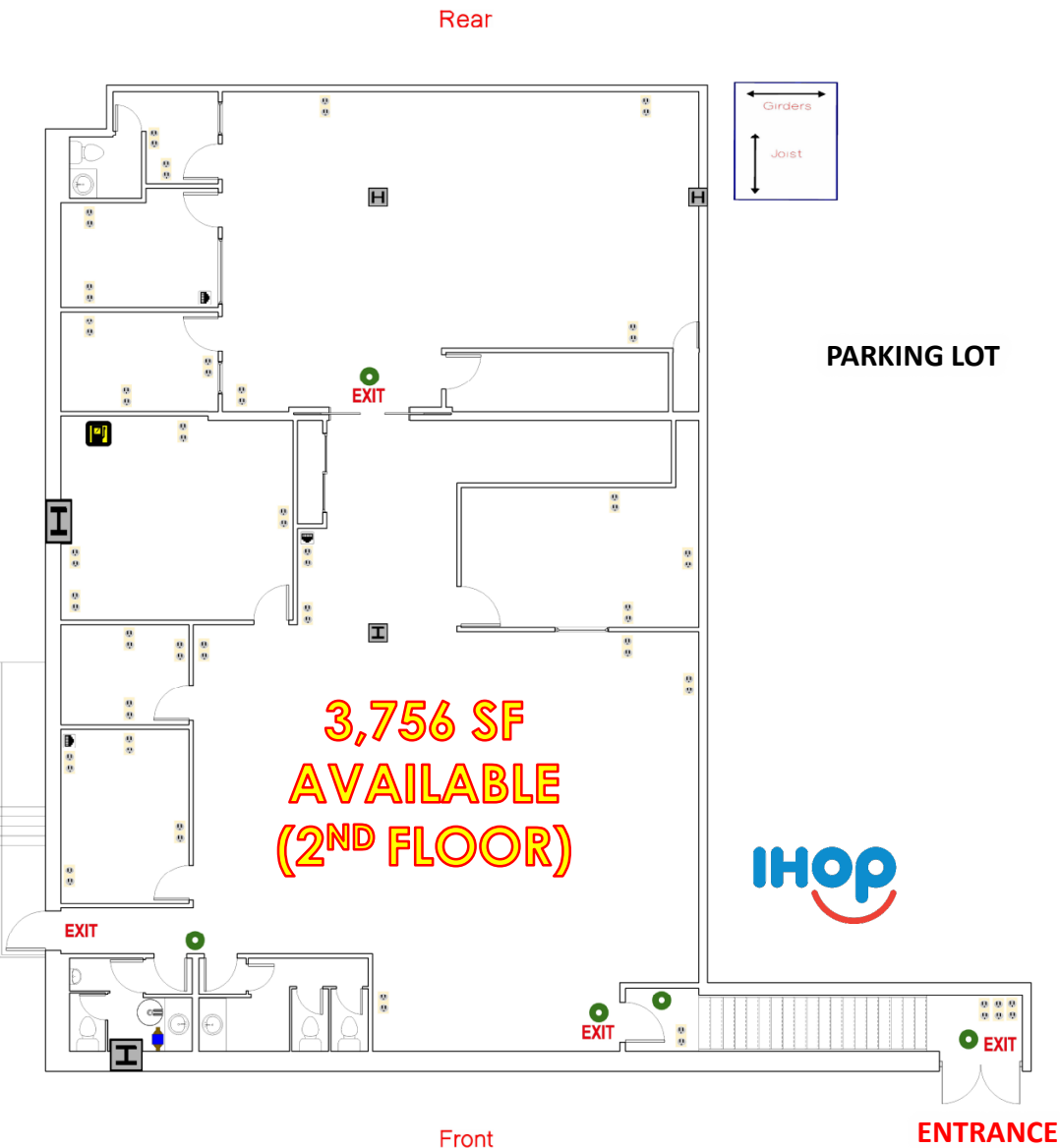
2550 Central Park Avenue | Yonkers, NY | Westchester County

RETAIL SPACE  
FOR LEASE

**17,507 SF± | 3,085 SF± | 3,756 SF± AVAILABLE**

**FORMER ARTHUR MURRAY DANCE STUDIO**

**CURRENTLY LESLIE'S POOL SUPPLY**



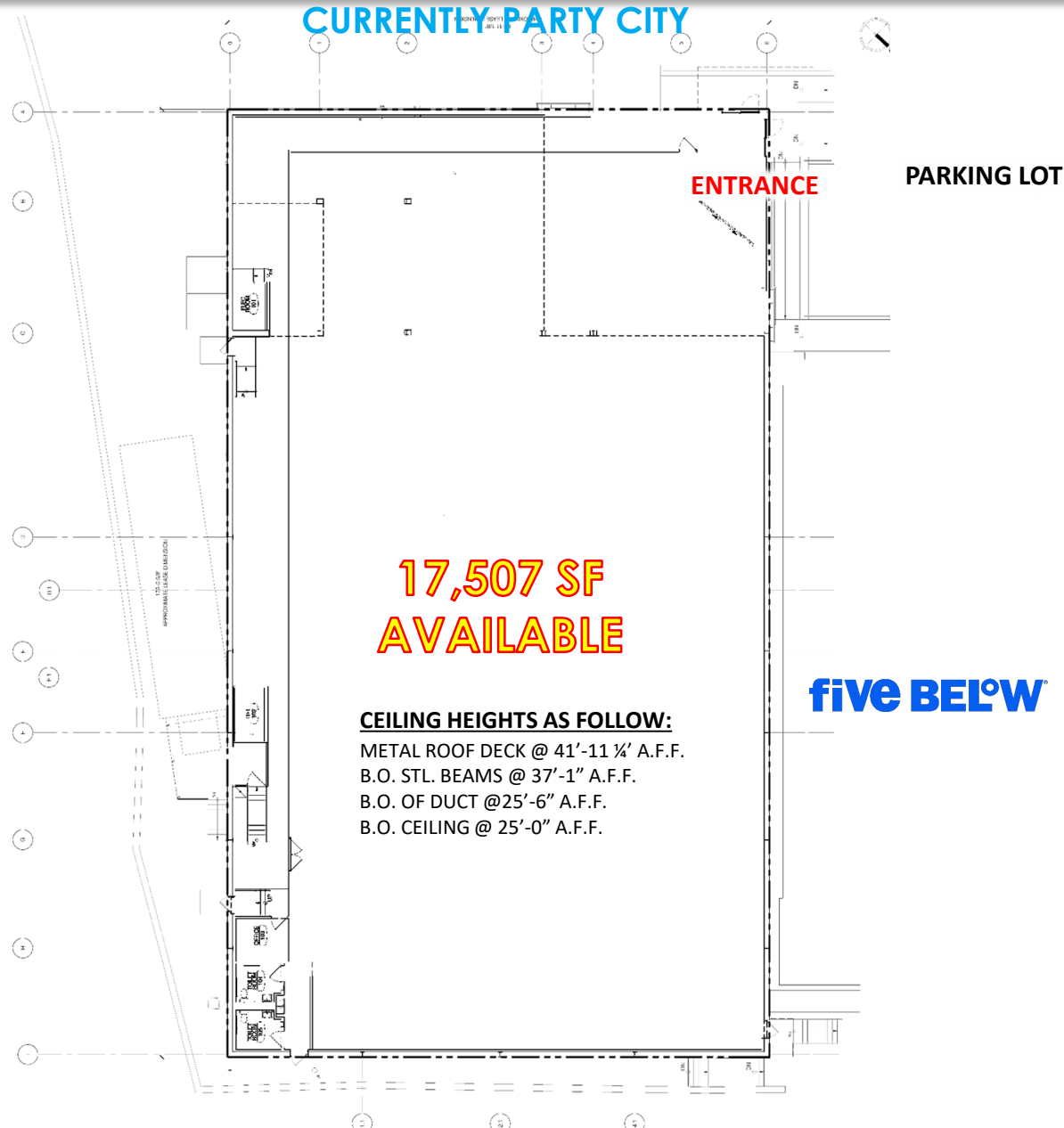
**ROYAL**  
PROPERTIES

# CENTRAL PLAZA

2550 Central Park Avenue | Yonkers, NY | Westchester County

RETAIL SPACE  
FOR LEASE

17,507 SF± | 3,085 SF± | 3,756 SF± AVAILABLE



**ROYAL**  
PROPERTIES



# CENTRAL PLAZA

2550 Central Park Avenue | Yonkers, NY | Westchester County

RETAIL SPACE  
FOR LEASE

17,507 SF± | 3,085 SF± | 3,756 SF± AVAILABLE



ROYAL  
PROPERTIES