

Westwood, NJ

701 Broadway

**RETAIL SPACE
FOR LEASE**



AVAILABLE:

1,900 SF
2,200 SF
3,000 SF

NEIGHBORING RETAILERS:

TJ Maxx, Trader Joe's, King's Food Markets, Dunkin', Mattress Firm, Walgreens, Starbucks, The UPS Store, European Wax Center, Valley Bank, AFC Urgent Care and many more

ADDITIONAL INFORMATION:

- 8,500 SF Strip Center
- Across from Westwood Plaza, Anchored by TJ Maxx
- Ideal Uses Include Fitness, Martial Arts, Music School, Dance Studio or Flex Storage

TRAFFIC COUNTS:

13,100 Cars per Day Along Broadway

ASKING RENT:

Call For Details

CAM/TAXES:

\$8.00/SF

AREA DEMOGRAPHICS

	1 Mile	3 Miles	5 Miles
Population	15,430	77,181	245,182
Avg. HH Income	\$157,916	\$173,719	\$168,206

**For More Information,
Please Contact:**

914-237-3400

Scott Milich – Ext. 116
SMilich@RoyalPropertiesInc.com



ROYAL
PROPERTIES

www.RoyalPropertiesInc.com

All information furnished herein is from sources deemed reliable. No warranty or representation is made to the accuracy thereof and it is submitted subject to errors, omissions and/or changes without notice.

Westwood, NJ

701 Broadway

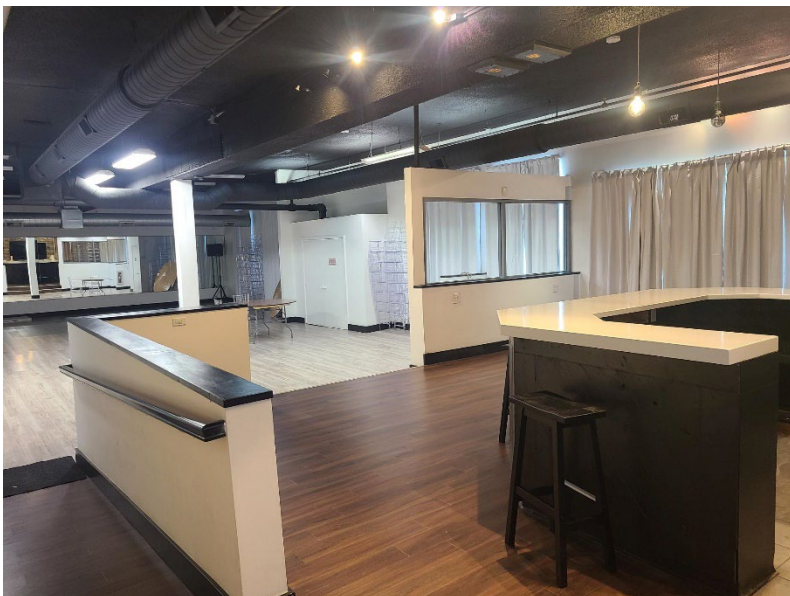
RETAIL SPACE
FOR LEASE



Westwood, NJ

701 Broadway

RETAIL SPACE
FOR LEASE



Westwood, NJ

701 Broadway

RETAIL SPACE
FOR LEASE

