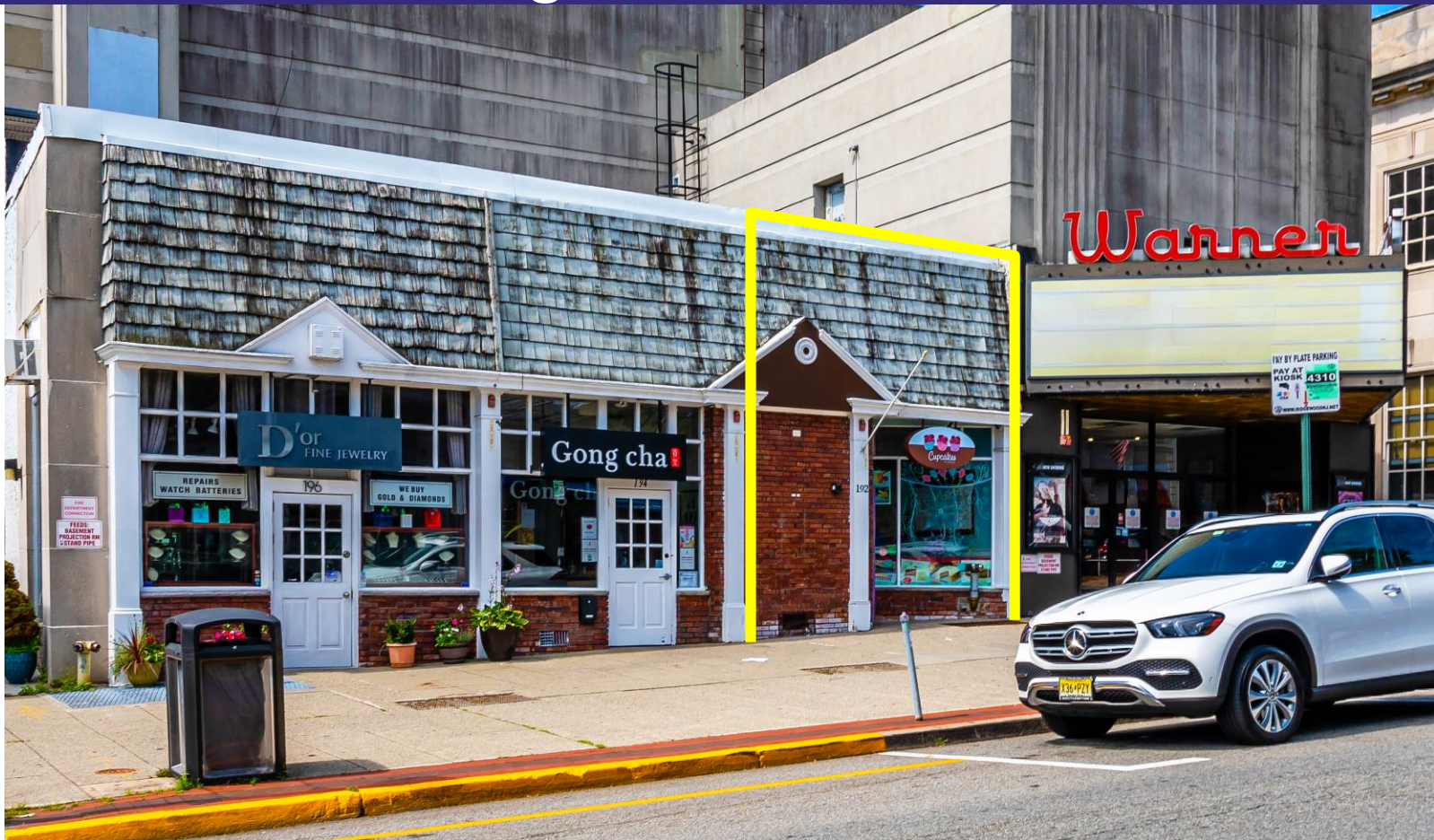


Ridgewood, NJ

RETAIL SPACE FOR LEASE

190 -196 East Ridgewood Avenue



AVAILABLE:

491 SF Plus Basement

JOIN:

D'or Fine Jewelry and Gong cha Bubble Tea

NEIGHBORING RETAILERS:

Starbucks, Walgreens, Wells Fargo, Talbots, Whole Foods, Chase, Citibank, Dunkin', Stop & Shop, Bank of America, Jersey Mike's, PNC Bank, Bareburger, Fitometry, Playa Bowls, StretchLab, Sherwin-Williams, Dairy Queen, and more

ADDITIONAL INFORMATION:

- 13'-7" of Frontage on E. Ridgewood Avenue
- One Block from Van Neste Square Memorial Park

TRAFFIC COUNTS:

18,724 Cars Per Day Along East Ridgewood Avenue

GROSS RENT:

Call For Details

AREA DEMOGRAPHICS

	1 Mile	3 Miles	5 Miles
Population	16,217	109,366	329,624
Avg. HH Income	\$190,880	\$173,215	\$142,401

For More Information,
Please Contact:

914-237-3400

James Aries – Ext. 114
Jim@RoyalPropertiesInc.com

Jeff Kintzer – Ext. 103
Jeff@RoyalPropertiesInc.com



ROYAL

PROPERTIES

www.RoyalPropertiesInc.com

All information furnished herein is from sources deemed reliable. No warranty or representation is made to the accuracy thereof and it is submitted subject to errors, omissions and/or changes without notice.

Ridgewood, NJ

RETAIL SPACE FOR LEASE

190 -196 East Ridgewood Avenue



ROYAL
PROPERTIES

Ridgewood, NJ

RETAIL SPACE FOR LEASE

190 -196 East Ridgewood Avenue

