

Mamaroneck, NY

243 Mamaroneck Avenue

RETAIL/PROFESSIONAL
SPACE FOR LEASE



AVAILABLE:

788 SF Plus Basement

JOIN:

Mamaroneck Cinemas and LMC Media

NEIGHBORING RETAILERS:

CVS, Chase Bank, Dunkin' Donuts, Verizon, Subway, Orangetheory, Chipotle, Smashburger, M&T Bank, Trustco Bank, Hand & Stone, Salsa Fresca, Miller's Toys, Nonna Carola Restaurant & Bar, Red Plum, Frankie & Fanucci's and more

ADDITIONAL INFORMATION:

- Retail Space at the Base of the Newly Renovated Mamaroneck Cinemas, with 8 Screens – Reopened June 2022
- Walking Distance to the Mamaroneck MTA Train Station
- Excellent Location and Visibility on the Mamaroneck Avenue Streetscape
- Surrounded by Numerous Restaurants, Retailers, Residential and Offices
- Near Harbor Island Park, The Emelin Theatre and the Mamaroneck Public Library

GROSS RENT:

Call for Details

AREA DEMOGRAPHICS

	1 Mile	3 Miles	5 Miles
Population	19,440	78,715	247,693
Avg. HH Income	\$160,529	\$189,847	\$165,263

For More Information,
Please Contact:

914-237-3400

Craig Benson – Ext. 105
Craig@RoyalPropertiesInc.com



ROYAL
PROPERTIES

www.RoyalPropertiesInc.com

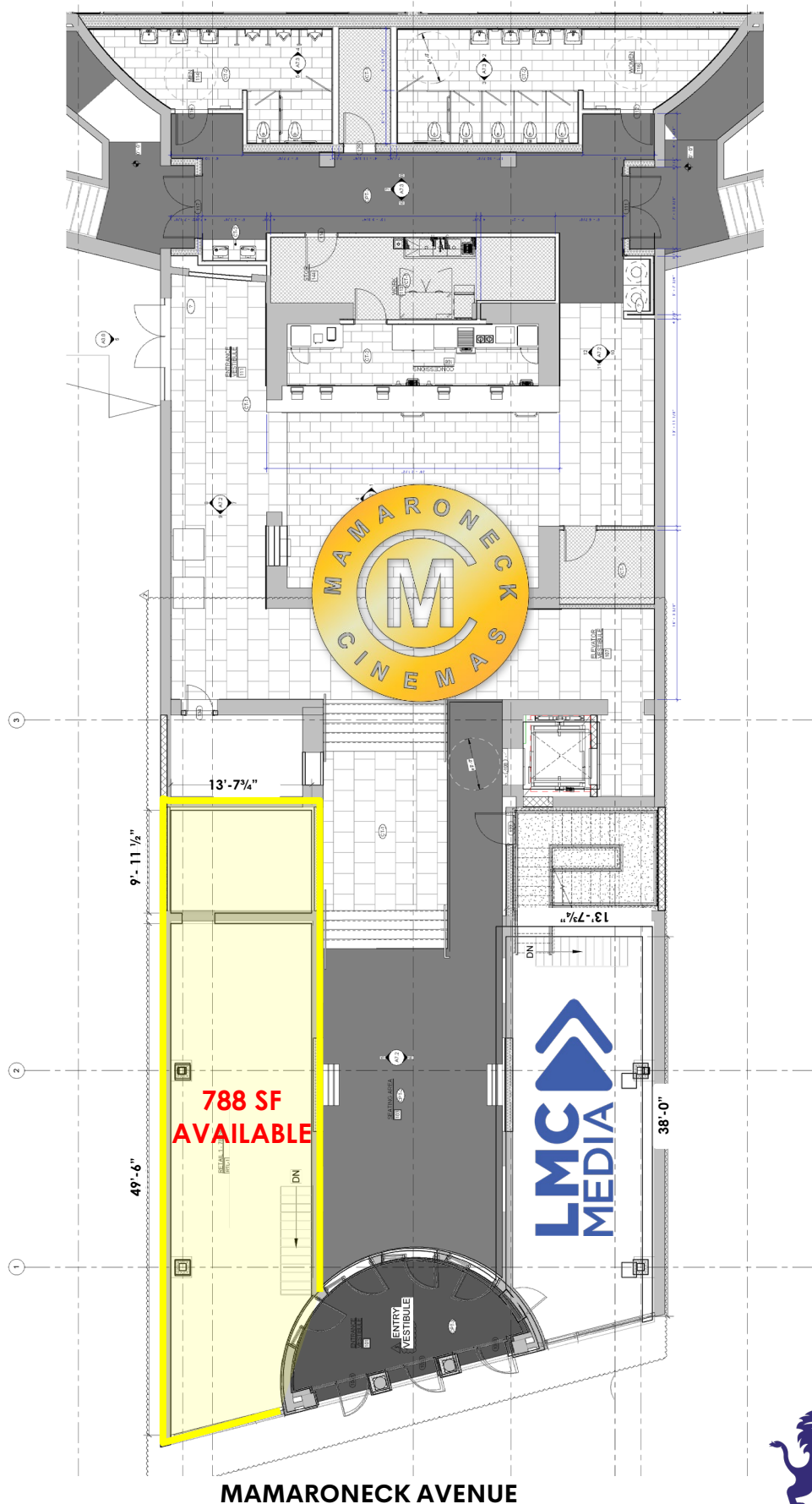
All information furnished herein is from sources deemed reliable. No warranty or representation is made to the accuracy thereof and it is submitted subject to errors, omissions and/or changes without notice.

Mamaroneck, NY

243 Mamaroneck Avenue

RETAIL/PROFESSIONAL
SPACE FOR LEASE

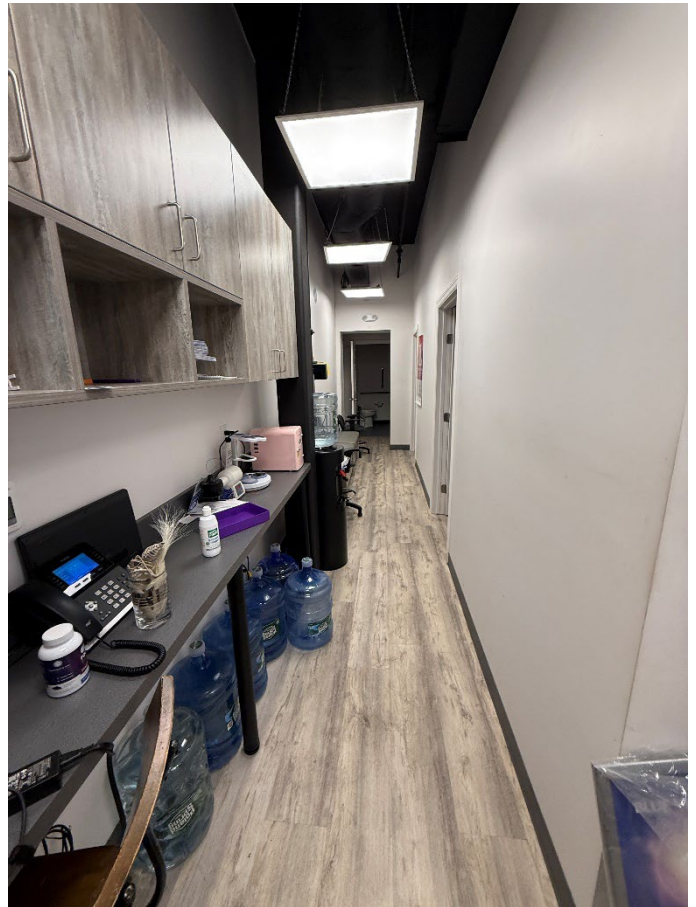
FLOOR PLAN



Mamaroneck, NY

243 Mamaroneck Avenue

RETAIL/PROFESSIONAL
SPACE FOR LEASE



Mamaroneck, NY

243 Mamaroneck Avenue

RETAIL/PROFESSIONAL
SPACE FOR LEASE



Mamaroneck, NY

243 Mamaroneck Avenue

RETAIL/PROFESSIONAL
SPACE FOR LEASE

