

Rye, NY

FREESTANDING RETAIL BUILDING FOR SALE/LEASE

1004 Boston Post Road



AVAILABLE:

900 SF± Freestanding Building

NEIGHBORING RETAILERS:

CVS, Starbucks, Jos A Bank, HSBC, Blue Mercury, The Granola Bar, Town Dock, Papyrus, Village Social, Fogama, Jack Rabbit, Ruby's Oyster Bar & Bistro, St. Joseph's Medical Center, Staples, Whole Foods Market, Target, Kohl's, The Vitamin Shoppe, Burger King, Old Navy, HomeGoods, Popeyes, Taco Bell, Greenwich Hospital, DSW, ULTA, Home Depot, TD Bank, McDonald's, Dunkin', LA Fitness, Mattress Firm, European Wax Center, Nothing Bundt Cakes and more

ADDITIONAL INFORMATION:

- Excellent Street Retail Location on .11 Acre Lot
- 7 Parking Spaces
- 10 Ton HVAC
- 400 AMPS

ASKING RENT/PRICE:

Call For Details

TAXES:

\$23,600/Year

AREA DEMOGRAPHICS

	1 Mile	3 Miles	5 Miles
Population	10,041	75,227	150,256
Avg. HH Income	\$203,808	\$161,113	\$174,963

**For More Information,
Please Contact:**

914-237-3400

Caroline Kintzer – Ext. 117
Caroline@RoyalPropertiesInc.com

Jeff Kintzer – Ext. 103
Jeff@RoyalPropertiesInc.com



ROYAL
PROPERTIES

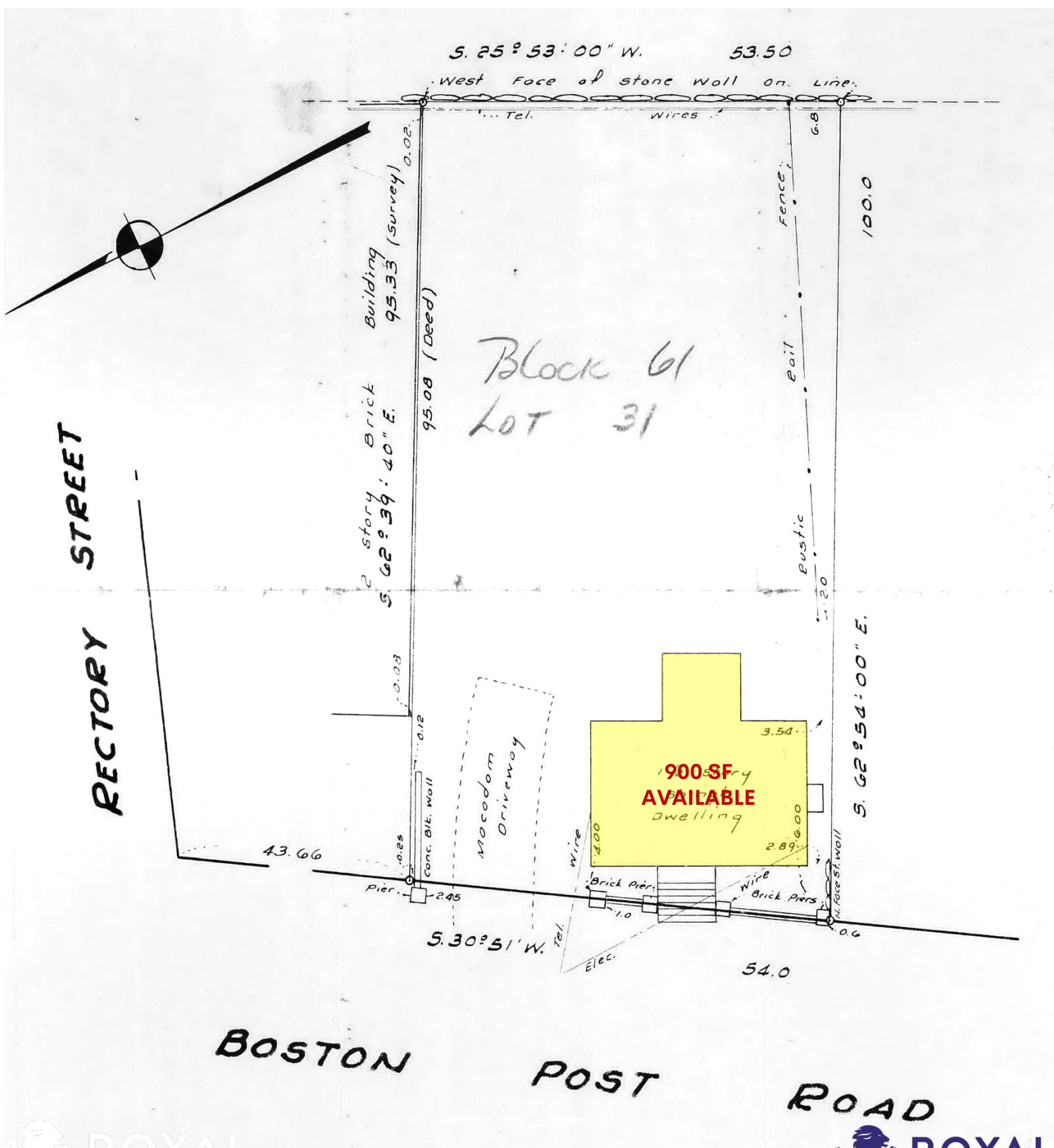
www.RoyalPropertiesInc.com

All information furnished herein is from sources deemed reliable. No warranty or representation is made to the accuracy thereof and it is submitted subject to errors, omissions and/or changes without notice.

Rye, NY

FREESTANDING RETAIL BUILDING FOR SALE/LEASE

1004 Boston Post Road



Rye, NY

**FREESTANDING RETAIL BUILDING
FOR SALE/LEASE**

1004 Boston Post Road



FREESTANDING RETAIL BUILDING FOR SALE/LEASE

