

Mount Kisco, NY

RETAIL SPACE FOR LEASE

162 East Main Street (Route 117)



AVAILABLE:

10,086 SF (7,777 SF Ground & 2,309 SF Lower Level)
11,154 SF (9,090 SF Ground & 2,064 SF Lower Level)
21,240 SF (16,867 SF Ground & 4,373 SF Lower Level)

NEIGHBORING RETAILERS:

Target, Stop & Shop, ShopRite, Mount Kisco Movie Theater, HomeGoods, GAP, Starbucks, Chico's, AT&T, Burger King, Sky Zone, Dunkin', Petco, Five Guys, Mattress Firm, Kohl's, Barnes & Noble, Wells Fargo, CVS, McDonald's, Dogtopia, LensCrafters and many more

TRAFFIC COUNT:

13,746 Cars Per Day Along East Main Street (Route 117)

ADDITIONAL INFORMATION:

- Excellent Street Retail Location
- High-Income Area
- Rear Municipal Parking
- 21,240 SF GLA

ASKING RENT:

Call For Details

CAM/TAXES:

\$8.10/SF

AREA DEMOGRAPHICS

| | 1 Mile | 3 Miles | 5 Miles |
|----------------|-----------|-----------|-----------|
| Population | 9,302 | 22,292 | 55,653 |
| Avg. HH Income | \$118,119 | \$163,320 | \$185,881 |

**For More Information,
Please Contact:**

914-237-3400

David Landes – Ext. 104
David@RoyalPropertiesInc.com

Jeff Kintzer – Ext. 103
Jeff@RoyalPropertiesInc.com



ROYAL
PROPERTIES

www.RoyalPropertiesInc.com

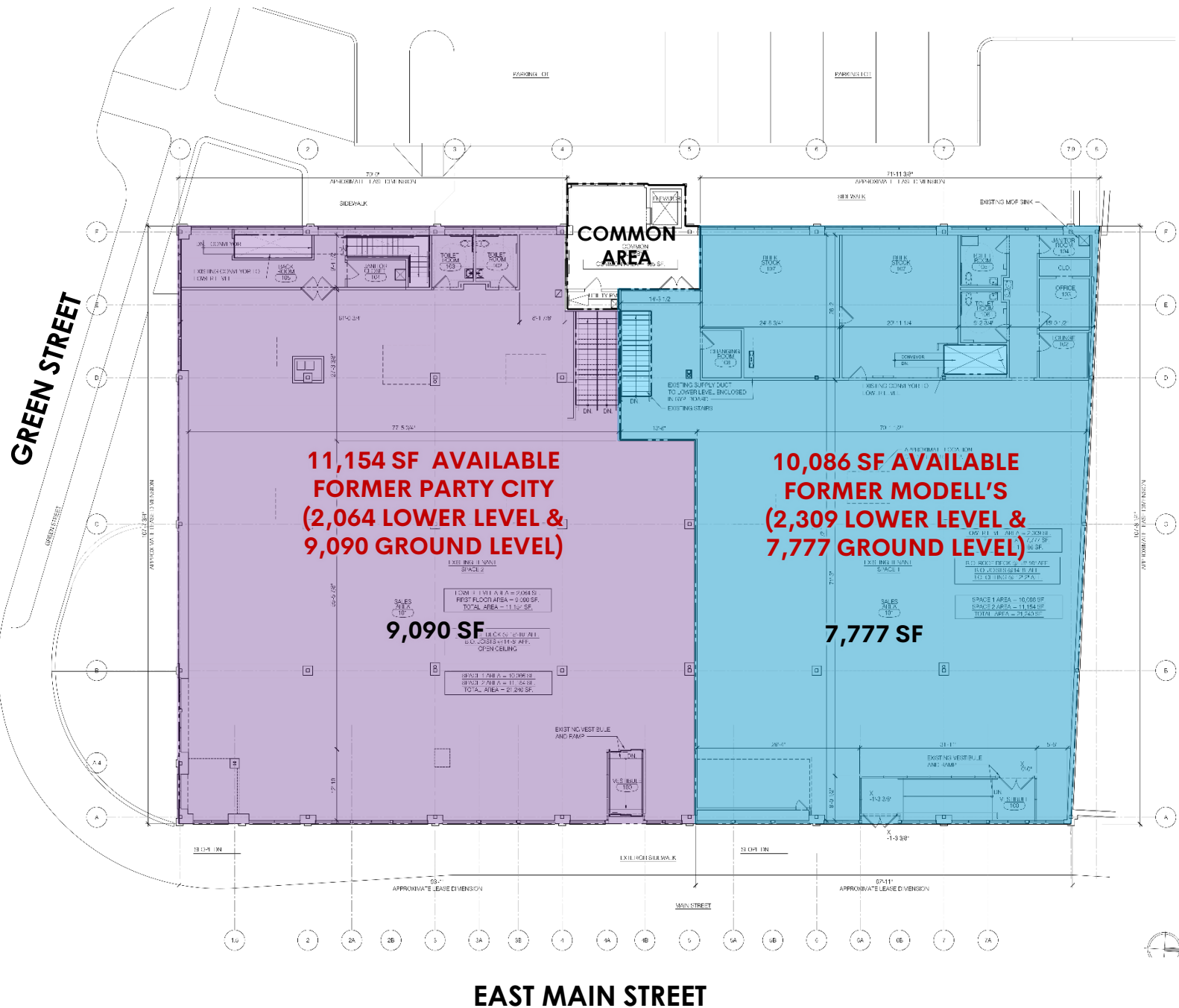
All information furnished herein is from sources deemed reliable. No warranty or representation is made to the accuracy thereof and it is submitted subject to errors, omissions and/or changes without notice.



Mount Kisco, NY

162 East Main Street (Route 117)

GROUND LEVEL FLOOR PLAN



LOWER LEVEL FLOOR PLAN

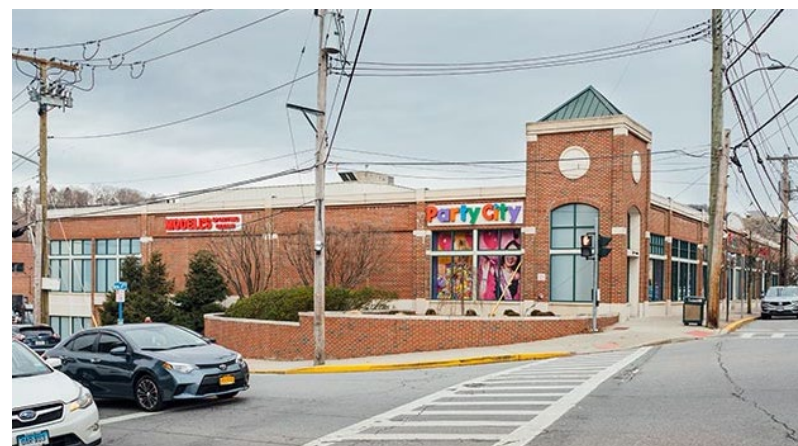


Mount Kisco, NY

PHOTOS

162 East Main Street (Route 117)

REAR PARKING LOT ACCESS



Mount Kisco, NY

162 East Main Street (Route 117)

**BIRDSEYE
AERIAL**



Mount Kisco, NY

162 East Main Street (Route 117)

